

# TRANZFORM® Fire Accordion Folding Fire Doors

## Model ERP10

Designed to provide automatic closing in the event of fire detection, TranZform Fire units are rated physical fire barriers that protect openings from the spread of fire and smoke. TranZform Fire units can be used in openings that are part of a required means of egress. Its double track / double wall panel design requires minimal headroom and features fire retardant, flexible header and floor seals attached to the top and bottom of the panels to protect against the passage of air and smoke. Up to 3 hour UL fire rating, UL "S" label smoke rating and FM ratings are available. With clearly marked Emergency Egress Hardware provided as standard, TranZform Fire units are designed to comply with the American with Disabilities Act accessibility standards.

### Practical Design Applications

- Openings requiring building code compliant emergency egress
  - elevator lobbies
  - horizontal exits
  - opening protectives in fire rated corridors
- An alternative to banks of fire rated swing doors where maintaining the use of the full opening width for functionality and aesthetics is desired.
  - atriums
  - casinos
  - hotels and conference centers
- Openings with minimal headroom requiring rated fire, smoke or ADA compliant fire protection
- Stage Proscenium Openings



### Other Available Features and Benefits

- **Fail-safe emergency response capability.** When an alarm is activated, TranZform Fire closes automatically to prevent the spread of fire and smoke, even in the event of a power failure.
- **Emergency Exit Hardware, provided as standard,** allows units to be used in openings that are part of a required means of egress. High temperature sensors prevent the unit from opening when a dangerous condition exists on the other side.
- **ADA Compliance:** TranZform Fire units comply with the American with Disabilities Act accessibility standards.
- **UL 3, 1 1/2, 1, 3/4, 1/2 hour and 20 minute labels** available. **UL "S" leakage rated assembly label** for smoke and draft control also available. **Factory Mutual Approval.** STC 41.
- **Less Headroom Clearance Required** than Rolling Fire Doors. TranZform Fire also requires no floor track.
- **For use in openings that are part of a required means of egress.**
- **Design Flexibility:** Single Slide or Bi-Parting Construction. Curved track available.
- **Quality Components:** Heavy duty roller with steel hanger pin assembly, mechanically secured hinges and drive chain configuration all ensure long life and allow for simple, cost effective service.

**CORNELL**  
**SAFE AND SECURE**

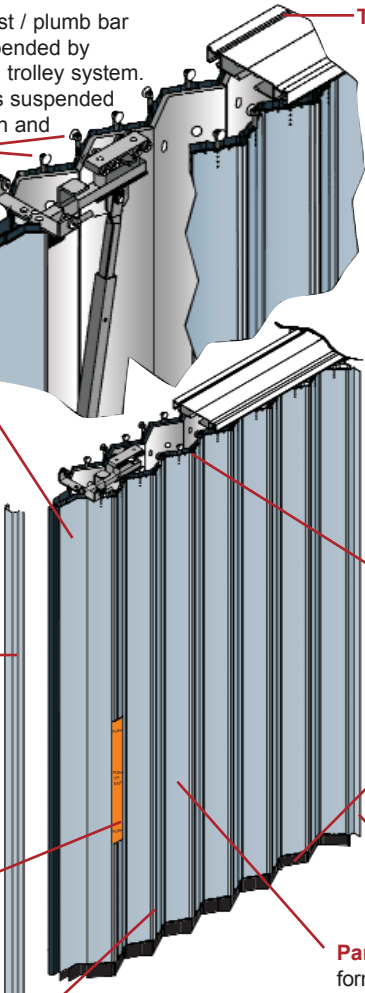
# TranZform® Fire Components

**Rollers** - Each lead post / plumb bar assembly shall be suspended by a 12 wheel ball bearing trolley system. Each individual panel is suspended using a steel hanger pin and ball bearing roller.

**Lead Post** - 24 gauge commercial grade coated steel member with material and finish to match panels. Lead sensing edge provided standard. An internally mounted plumb bar support shall keep the lead posts vertical and in proper alignment during operation and ensure tight fitting closure of the door.

**Wall Mounted Strike Post** - Recessed 18 gauge coated cold rolled steel member that receives the lead post and is secured to the wall opposite the stacked door. Finish to match wall panels.

**Emergency Exit Hardware** - Vertical panic bar with ADA / Emergency Egress instructions provided as standard. Additional panic bars available on wide doors. Located on both sides.



**Track** - Interconnected double rail heavy duty extruded aluminum or steel track sections on 8" centers to support and retain the roller assemblies. Track is supplied with a white baked-on powder coated finish standard, with mill finish aluminum a readily available option. Header and header support construction is not by Cornell.

**Motor Operation** - Provided as standard for controlled automatic closing with emergency exit capability and ease of testing. DC 1/4, 1/2 or 1 HP gear-motor, limit switch control system, drive sprocket and clutch. Operated by DC power supplied from two 12-volt maintenance free batteries located in the electronic control box. Batteries are continuously charged by the building's electrical service and are automatically maintained to capacity.

**Header and Floor Sweeps** - Continuous, fire retardant flexible seals in flat black are attached to the top and bottom of the panels to eliminate gaps at the floor and head area for fire and smoke protection.

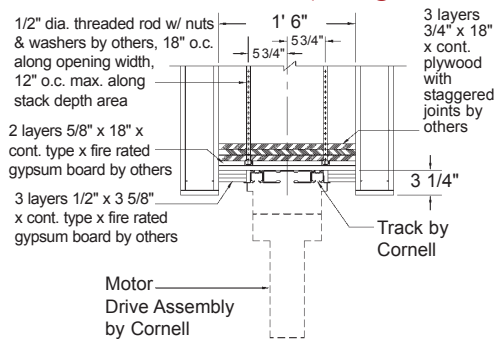
**Floating Jamb** - 18 gauge aluminized steel floating jamb assembly that travels within the storage pocket.

**Panels** - Continuous length, 4 1/2" wide panels formed of 24 gauge commercial grade corrugated coated steel. Coating process includes a flexible urethane primer followed by a high performance, medium gloss, baked-on polyester coating in standard steel gray color.

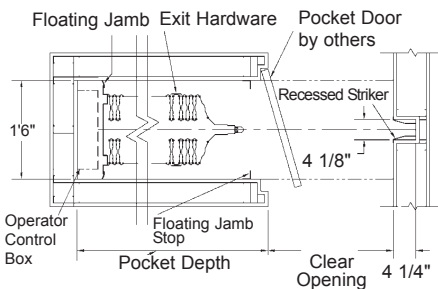
**Hinges** - Continuous length, full height 24 gauge commercial grade coated metal hinges interconnect door panels. Material and finish to match panels. Allow for simple panel installation and replacement.

## Mounting & Clearances

(Straight Track Design Shown)



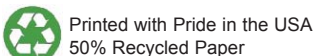
Head Detail



Plan View

TranZform Fire Doors are built to order to fit openings of virtually any width from 3' 6" to 22' high.

Patent review pending.



## TranZform Fire

Horizontal sliding rated physical fire barriers that protect openings from the spread of fire and smoke.

### Ratings

- UL 3, 1 1/2, 1, 3/4, 1/2 hour, 20 minute and "S" labels available.
- Factory Mutual Approval.
- Compliance with the American with Disabilities Act accessibility standards.
- Acceptable for use in openings that are part of a required means of egress.

### Operation

**Fail-safe emergency response capability.** When an alarm is activated, TranZform Fire closes automatically to prevent the spread of fire and smoke. In emergency mode, pressure on the vertical panic bar causes door to open 60°, pause for 3 seconds, then automatically close. Closing fire doors can also be opened manually by pushing against the leading edge / obstruction detector.

### TranZform Fire Hang Weight

Approximately 5.5 lbs. per sq. ft. extended.

### TranZform Fire Stack Depth

2" per foot of opening width plus 24" with 1/2 HP operator. Consult factory for stack depth for 1/4 and 1 HP operators.

### Standard Features

- Intelligent automatic operation
- Cornell electric motor operator
- Leading Edge Obstruction Detector
- Built to order for virtually any width opening from 3' 6" to 22' H standard construction.

### Product Options

- Single Slide or Bi-Parting Construction
- Curved track construction
- Non-sway construction
- Finish colors: consult factory

### Full Line Product Family

Also available: STC 45 TranZform® Sound provides unparalleled sound control, TranZform® Space provides convenient space separation and security.

# CORNELL

**SAFE AND SECURE**

An ISO 9001:2000 Registered Company

Crestwood Industrial Park  
Mountaintop, PA 18707

TEL 800.233.8366 • FAX 800.526.0841

Architect and Design Support: Ext. 551

Website: [www.cornelliron.com](http://www.cornelliron.com)

Email: [ADS@cornelliron.com](mailto:ADS@cornelliron.com)