



# SPLIT-TYPE FORK TURRETS

## SPECIFICATIONS

**FORK**

Terminal: Brass, Tin Plate  
Bushing: White PTFE **RoHS**

**FORK-TO-TURRET**

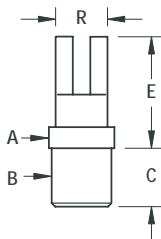
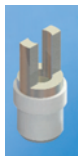


FIG. 1

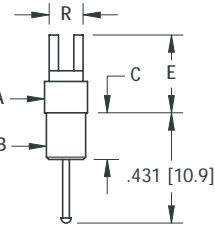


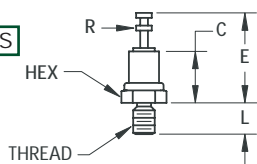
FIG. 2

CAT. NO.	FIG. NO.	A	B	C	E	R	Mtg. Hole Dia.
11100	1	.172 (4.4)	.148 (3.8)	.125 (3.2)	.250 (6.4)	.125 (3.2)	.136 (3.5)
11111	1	.187 (4.8)	.171 (4.3)	.150 (3.8)	.390 (9.9)	.148 (3.8)	.158 (4.0)
11112	1	.187 (4.8)	.171 (4.3)	.150 (3.8)	.453 (11.5)		
11113	1	.187 (4.8)	.171 (4.3)	.150 (3.8)	.328 (8.3)		
11114	1	.187 (4.8)	.171 (4.3)	.150 (3.8)	.390 (9.9)		
11115	1	.187 (4.8)	.171 (4.3)	.150 (3.8)	.453 (11.5)		
11116	2	.187 (4.8)	.171 (4.3)	.212 (5.4)	.390 (9.9)		

# THREADED TURRET TERMINALS

## SPECIFICATIONS

Terminal: Brass, Tin Plate  
Bushing: White PTFE **RoHS**



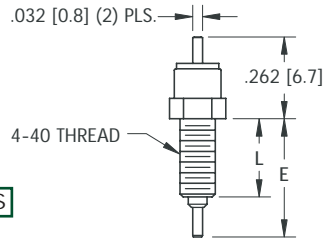
CAT. NO.	Thread	Hex	C	E	L	R
11350	2-56	.156 (3.9)	.206 (5.2)	.360 (9.1)	.125 (3.2)	.062 (1.6)
11351	4-40	.250 (6.4)	.270 (6.9)	.510 (12.9)	.250 (6.4)	.094 (2.4)
11352	6-32	.250 (6.4)	.270 (6.9)	.510 (12.9)	.375 (9.5)	.094 (2.4)

# THREADED FEED-THRU TERMINALS



## SPECIFICATIONS

Terminal: Brass, Tin Plate  
Bushing: White PTFE **RoHS**  
Body: Brass, Nickel Plate

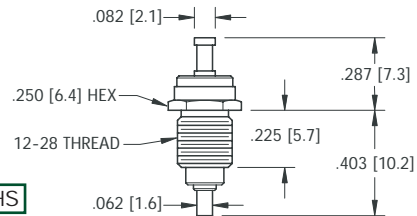


CAT. NO.	E	L
11360	.328 (8.3)	.200 (5.1)
11361	.378 (9.6)	.250 (6.4)



## SPECIFICATIONS

Terminal: Brass, Tin Plate  
Bushing: White PTFE **RoHS**  
Body: Brass, Nickel Plate

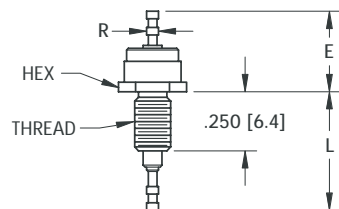


**CAT. NO. 11362**



## SPECIFICATIONS

Terminal: Brass, Tin Plate  
Bushing: White PTFE **RoHS**  
Body: Brass, Nickel Plate



CAT. NO.	Thread	Hex	E	L	R
11363	10-32	.312 (7.9)	.425 (10.8)	.565 (14.3)	.062 (1.6)
11364	6-32	.188 (4.8)	.368 (9.3)	.510 (12.9)	.040 (1.0)

# TEST POINT JACKS

## SPECIFICATIONS

Terminal Jack: Beryllium Copper (QQ-C-533)

Plating: Gold per MIL-G-45204, Type II

Bushing:

White PTFE **RoHS** (RoHS Compliant)

Red or Black PTFE **RoHS** (Non-RoHS Compliant)



FIG. 1

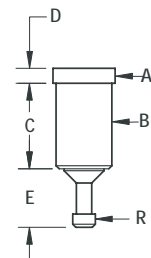


FIG. 2

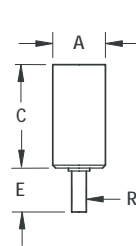
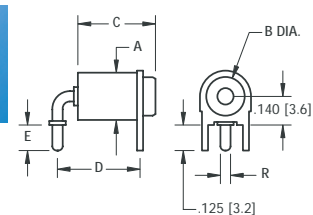


FIG. 3



RoHS			NON-RoHS			FIG.	A	B	C	D	E	R	Probe Dia. ± .001 (.03)	Probe Length
White	Red	Black	CAT. NO.	CAT. NO.	CAT. NO.									
11001	11001-R	11001-B	1	.142 (3.6)	.120 (3.0)	.244 (6.2)	.046 (1.2)	.120 (3.0)	.060 (1.5)	.040 (1.0)	.205 (5.2)			
11002	11002-R	11002-B	1	.142 (3.6)	.120 (3.0)	.283 (7.2)	.046 (1.2)	.120 (3.0)	.060 (1.5)	.040 (1.0)	.245 (6.2)			
11003	11003-R	11003-B	1	.172 (4.4)	.140 (3.6)	.142 (3.6)	.050 (1.3)	.060 (1.5)	.080 (2.0)	.040 (1.0)	.125 (3.2)			
11004	11004-R	11004-B	1	.172 (4.4)	.148 (3.8)	.179 (4.5)	.046 (1.2)	.120 (3.0)	.060 (1.5)	.040 (1.0)	.140 (3.6)			
11005	11005-R	11005-B	1	.218 (5.5)	.185 (4.7)	.301 (7.6)	.050 (1.3)	.105 (2.7)	.125 (3.2)	.080 (2.0)	.315 (8.0)			
11006	11006-R	11006-B	1	.218 (5.5)	.185 (4.7)	.271 (6.9)	.046 (1.2)	.120 (3.0)	.074 (1.9)	.080 (2.0)	.195 (4.9)			
11007	11007-R	11007-B	1	.218 (5.5)	.185 (4.7)	.271 (6.9)	.046 (1.2)	.120 (3.0)	.074 (1.9)	.090 (2.3)	.195 (4.9)			
11008	11008-R	11008-B	1	.218 (5.5)	.185 (4.7)	.301 (7.6)	.046 (1.2)	.120 (3.0)	.074 (1.9)	.080 (2.0)	.225 (5.7)			
11009	11009-R	11009-B	1	.218 (5.5)	.185 (4.7)	.400 (10.2)	.050 (1.3)	.187 (4.8)	.074 (1.9)	.080 (2.0)	.280 (7.1)			
11010	11010-R	11010-B	1	.218 (5.5)	.185 (4.7)	.271 (6.9)	.046 (1.2)	.136 (3.5)	.074 (1.9)	.080 (2.0)	.340 (8.6)			
11011	11011-R	11011-B	2	.218 (5.5)	-	.430 (10.9)	-	.150 (3.8)	.050 (1.3)	.080 (2.0)	.200 (5.1)			
11012	11012-R	11012-B	2	.218 (5.5)	-	.500 (12.7)	-	.150 (3.8)	.050 (1.3)	.080 (2.0)	.280 (7.1)			
11013	11013-R	11013-B	3	.218 (5.5)	.187 (4.8)	.689 (17.5)	.500 (12.7)	.125 (3.2)	.050 (1.3)	.080 (2.0)	.500 (12.7)			
11014	11014-R	11014-B	3	.218 (5.5)	.187 (4.8)	.378 (9.6)	.400 (10.2)	.125 (3.2)	.050 (1.3)	.080 (2.0)	.250 (6.4)			
11015	11015-R	11015-B	3	.218 (5.5)	.187 (4.8)	.378 (9.6)	.400 (10.2)	.187 (4.7)	.035 (8.9)	.080 (2.0)	.250 (6.4)			
11016	11016-R	11016-B	3	.218 (5.5)	.187 (4.8)	.378 (9.6)	.500 (12.7)	.125 (3.2)	.050 (1.3)	.080 (2.0)	.250 (6.4)			